

THORNFIELD ROAD

London • W12



HARWOOD
ADVISORY

A superb interior designed four-bedroom family home situated in the highly regarded Shepherds Bush Market Village.

THORNFIELD ROAD

London • W12



HARWOOD
ADVISORY

On entering the property there is an immediate feeling of space and grandeur with a large open double reception room with 3m plus ceilings, leading onto a lovely eat-in kitchen.

THORNFIELD ROAD

London • W12



HARWOOD
ADVISORY

THORNFIELD ROAD

London • W12



HARWOOD
ADVISORY

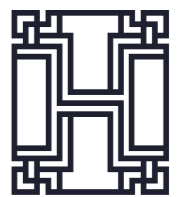
On the first floor, you'll find the principal bedroom with ample built-in storage, alongside a second spacious double bedroom.

To the rear, a large family bathroom with bath, large separate shower. On the 2nd floor, two more double bedrooms and a bathroom.

The house has a South facing garden, ideal for entertaining and having a BBQ.



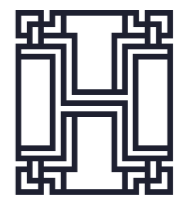
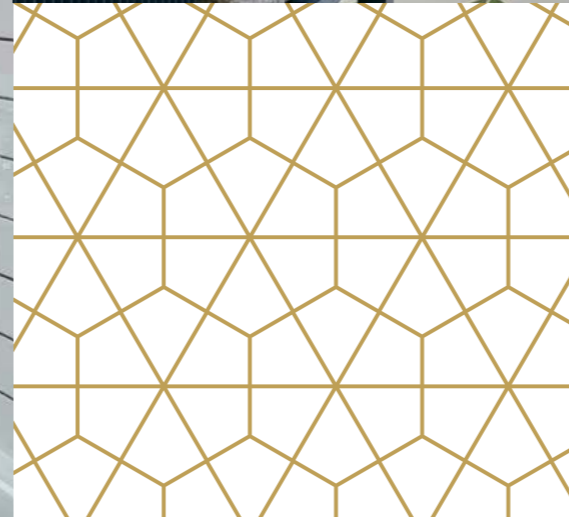
THORNFIELD
ROAD
London • W12



HARWOOD
ADVISORY

THORNFIELD ROAD

London • W12



HARWOOD
ADVISORY

THORNFIELD
ROAD

London • W12

Thornfield Road is one of the most popular streets in Shepherd's Bush's Market Village, especially amongst families within the area.

The nearest stations are Goldhawk Road, approximately 0.4 miles (Circle and Hammersmith City), Shepherd's Bush Station, approximately 0.7 miles (Central and Overground) and Hammersmith, approximately 0.9 miles (Piccadilly, District, Circle and Hammersmith City) there are also a range of buses that provide excellent services to Central London.



HARWOOD
ADVISORY

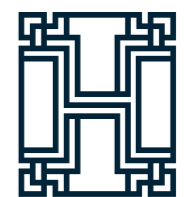
THORNFIELD ROAD

London • W12

Thornfield Road offers convenient access out of London to the west via the A4 and M4.

Nearby amenities include brilliant gastro pubs; extensive shopping, dining, and entertainment options at Westfield and Television Centre; and the redevelopment of Shepherd's Bush Market.

The location is also ideal for accessing top private and public schools in the borough, including St. Stephen's Primary School.



HARWOOD
ADVISORY





THORNFIELD ROAD

London • W12

Accommodation

Entrance Hall | Double Reception |
Eat in Kitchen | Principal Bedroom
| 2nd Double Bedroom | Family
Bathroom | Two further double
Bedrooms | Bathroom | South
Facing Garden

Terms Tenure:

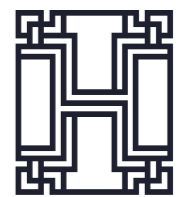
Freehold

Council Tax: Band F

Local Authority:

Hammersmith & Fulham

Asking Price: £1,495,000



HARWOOD
ADVISORY

Thornfield Road, W12

Approximate Gross Internal Area

159 sq m/ 1710 sq ft Including Under 1.5m and Under Eaves

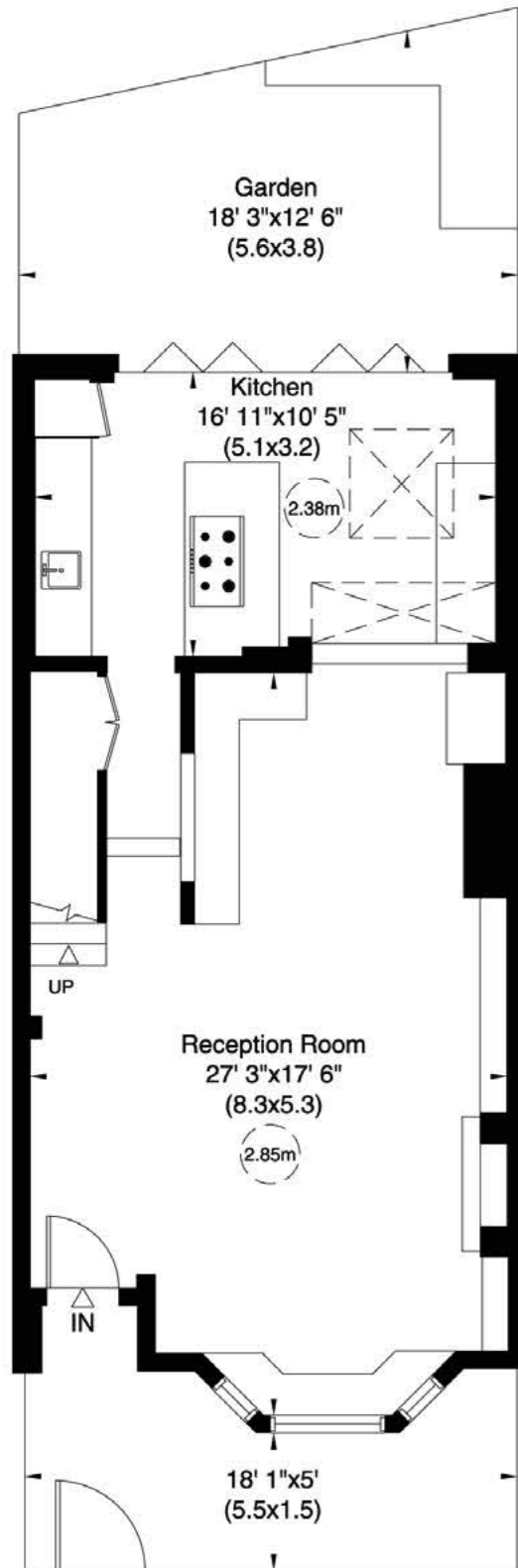
144 sq m/ 1552 sq ft Excluding Under 1.5m and Under Eaves

Not to Scale, for identification only

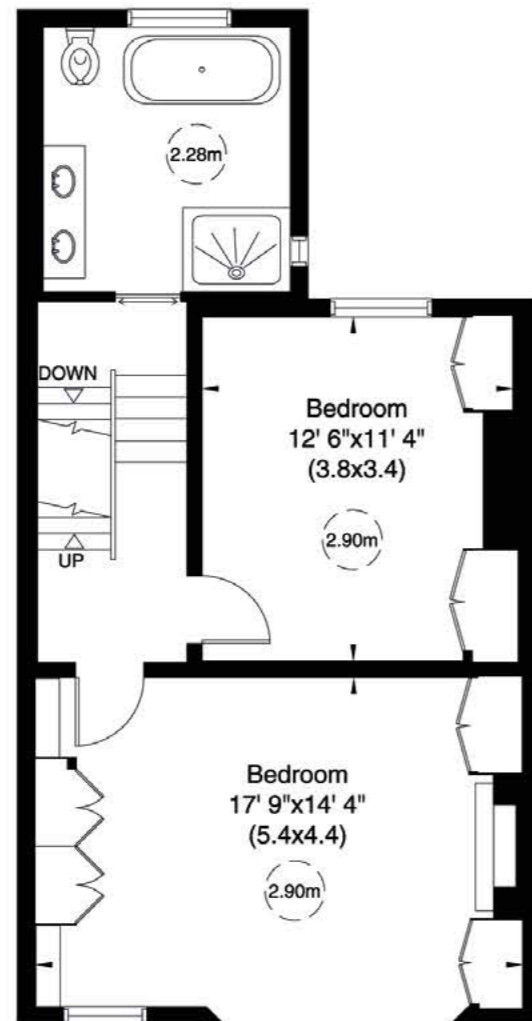


THORNFIELD ROAD

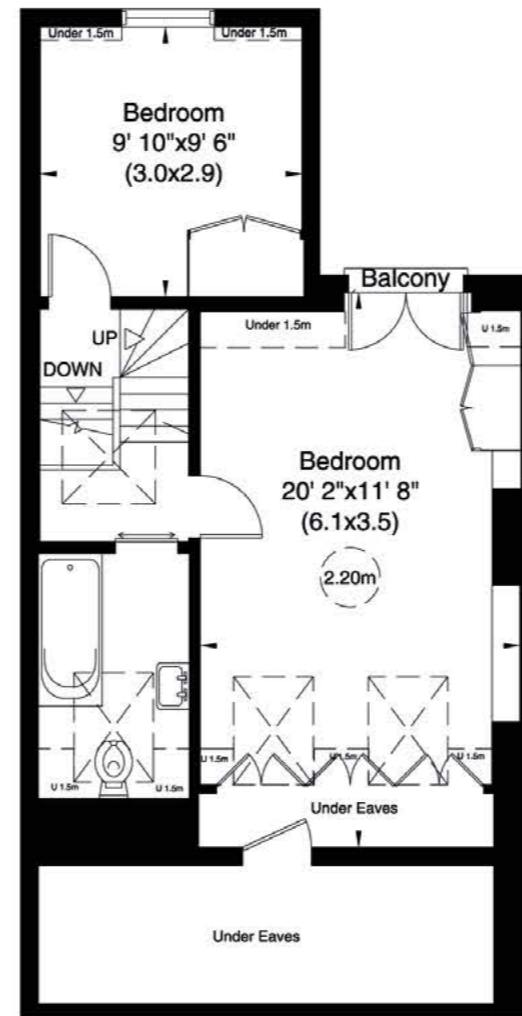
London • W12



Ground Floor



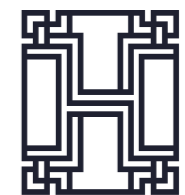
First Floor



Second Floor

ENERGY EFFICIENCY RATING:

Score	Energy rating	Current	Potential
92+	A		
81-91	B		82 B
69-80	C	69 C	
55-68	D		
39-54	E		
21-38	F		
1-20	G		



HARWOOD
ADVISORY

For guidance only and must not be relied upon as a statement of fact.

All measurements and areas are approximate only (and have been prepared in accordance with the current edition of the RICS Code of Measuring Practice).

For more information, contact:

Sami Robertson

T: +44 (0)7748 508 891

E: sami@harwoodadvisory.com

Ollie Blakelock

T: +44 (0)7979 692 240

E: ollie@harwoodadvisory.com



HARWOOD
ADVISORY

Important Notice: These particulars are not an offer or contract, nor part of one. You should not rely on statements by Harwood Advisory Ltd in the particulars or by word of mouth or in writing ("information") as being factually accurate about the property, its condition or its value. Neither Harwood Advisory Ltd nor any joint agent has any authority to make any representations about the property, and accordingly any information given is entirely without responsibility on the part of the agents, seller(s) or lessor(s). Any photographs, property videos or virtual viewings show only certain parts of the property as they appeared at the time they were taken. Areas, measurements and distances given are approximate only. Any reference to alterations to, or use of, any part of the property does not mean that any necessary planning, building regulations or other consent has been obtained. A buyer or lessee must find out by inspection or in other ways that these matters have been properly dealt with and that all information is correct. All information is correct at the time of going to print.

Particulars dated February 2025. Photographs and videos dated February 2025.