

BEDFORD GARDENS

Kensington • London



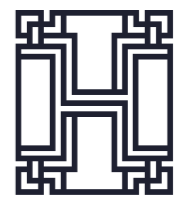
HARWOOD
ADVISORY

A beautiful family house, presented in excellent condition, situated on this wide, prestigious, tree-lined street in the heart of Kensington.



**BEDFORD
GARDENS**

Kensington • London



HARWOOD
ADVISORY

The Grade II listed house, measuring approximately 2,150 sq.ft (198 sq.m), is set back from the road by a large front garden and has an elegant façade with a covered iron balcony on the 1st floor.



BEDFORD
GARDENS
Kensington • London



HARWOOD
ADVISORY

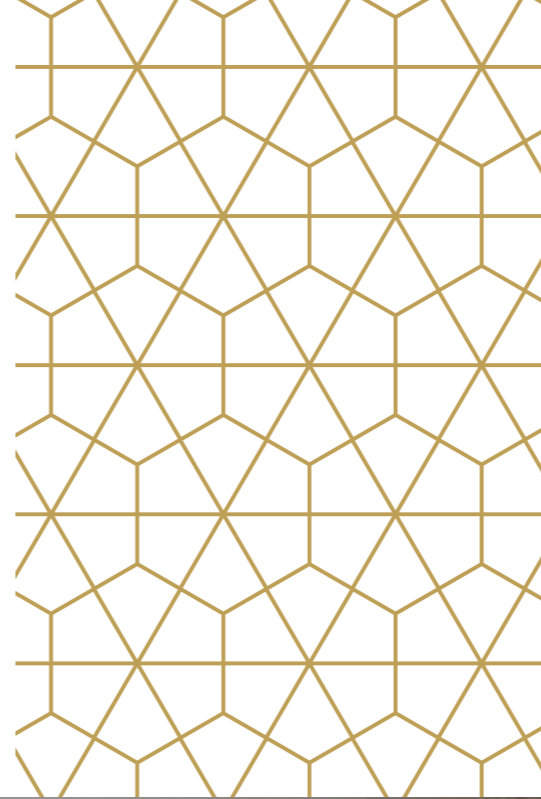
On entering the property there is excellent entertaining space on the ground floor with a reception room spanning the length of the house, a study area on the half landing and an open plan kitchen, dining and living room on the lower ground floor.

**BEDFORD
GARDENS**
Kensington • London

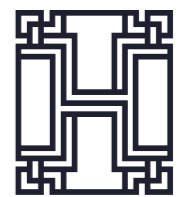



HARWOOD
ADVISORY

There are 4 bedrooms and 2 bathrooms on the 1st and 2nd floors and in addition the house boasts a stunning 68 ft south facing garden.



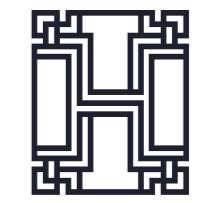
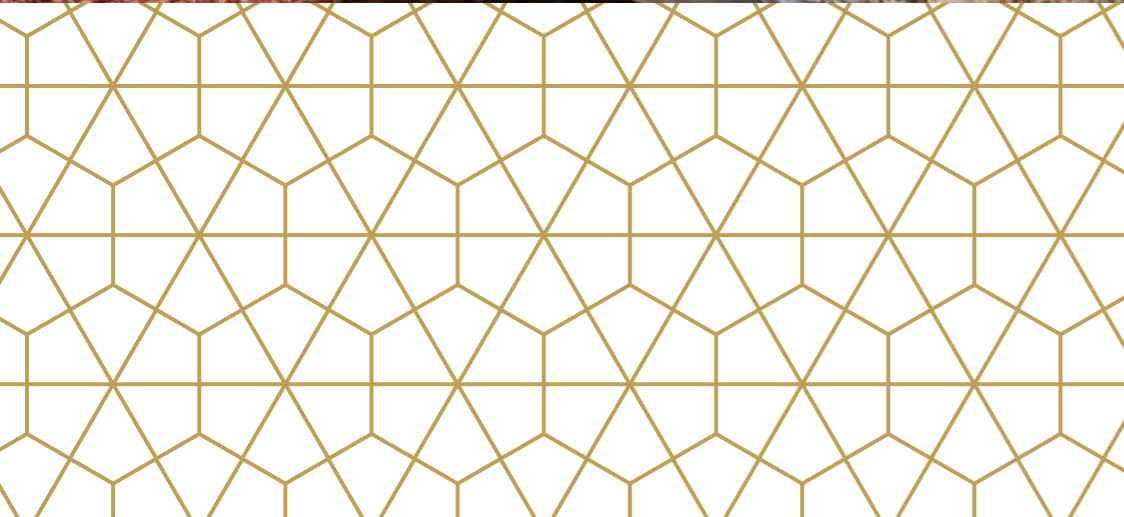
**BEDFORD
GARDENS**
Kensington • London



HARWOOD
ADVISORY

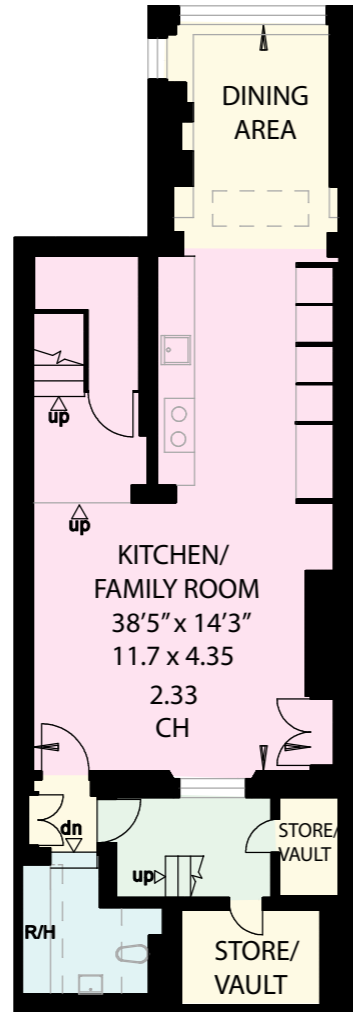


BEDFORD
GARDENS
Kensington • London

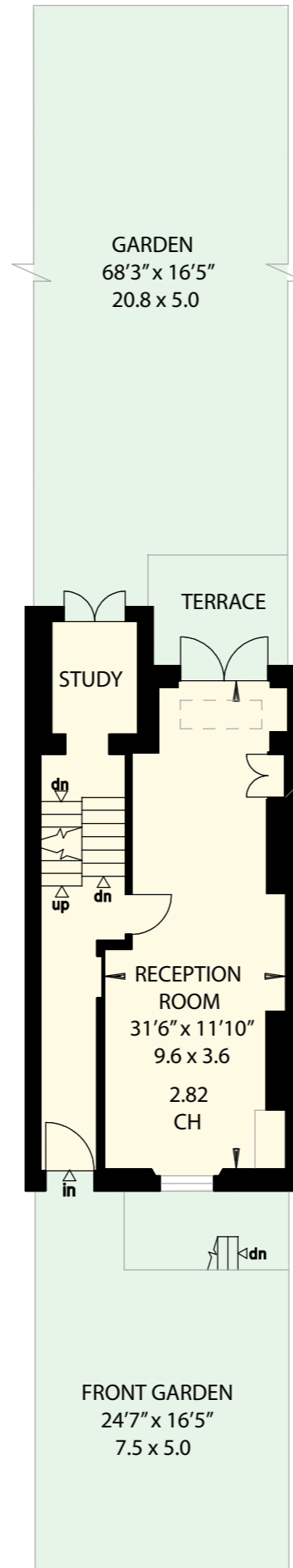


HARWOOD
ADVISORY

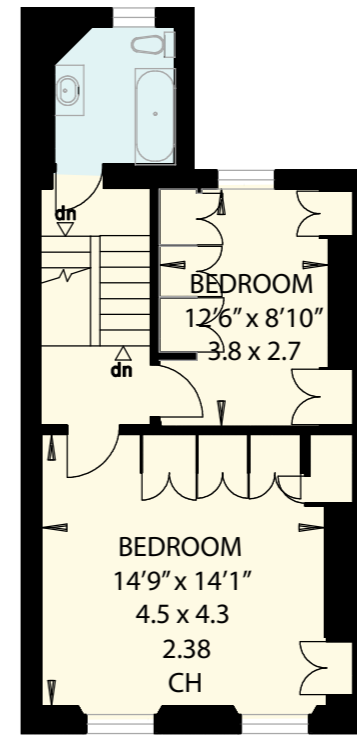
Both Notting Hill Gate and High Street Kensington are easily accessible as are the wide open spaces of both Holland Park and Kensington Gardens.



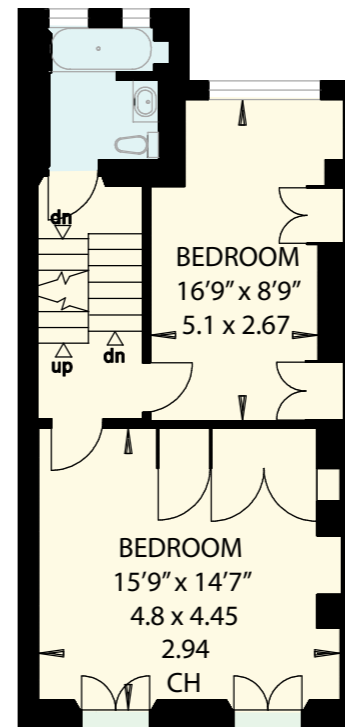
LOWER GROUND FLOOR



GROUND FLOOR



SECOND FLOOR



FIRST FLOOR

BEDFORD GARDENS

Kensington • London

BEDFORD GARDENS
LONDON W8

Gross Internal Area = 198.7 sq metres
(Excluding External Vaults) 2150 sq feet

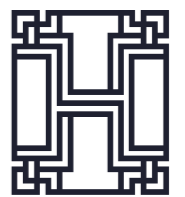
Grade II Listed

Local Authority
Royal Borough of
Kensington and Chelsea

Size
2,150 sq.ft (198 sq.m)

EPC: E

Freehold



HARWOOD
ADVISORY

For more information, contact:

Sami Robertson

T: +44 (0)7748 508 891

E: sami@harwoodadvisory.com

Ollie Blakelock

T: +44 (0)7979 692 240

E: ollie@harwoodadvisory.com

Susannah Fox

T: +44 (0)7841 539 848

E: susannah@harwoodadvisory.com



HARWOOD

ADVISORY